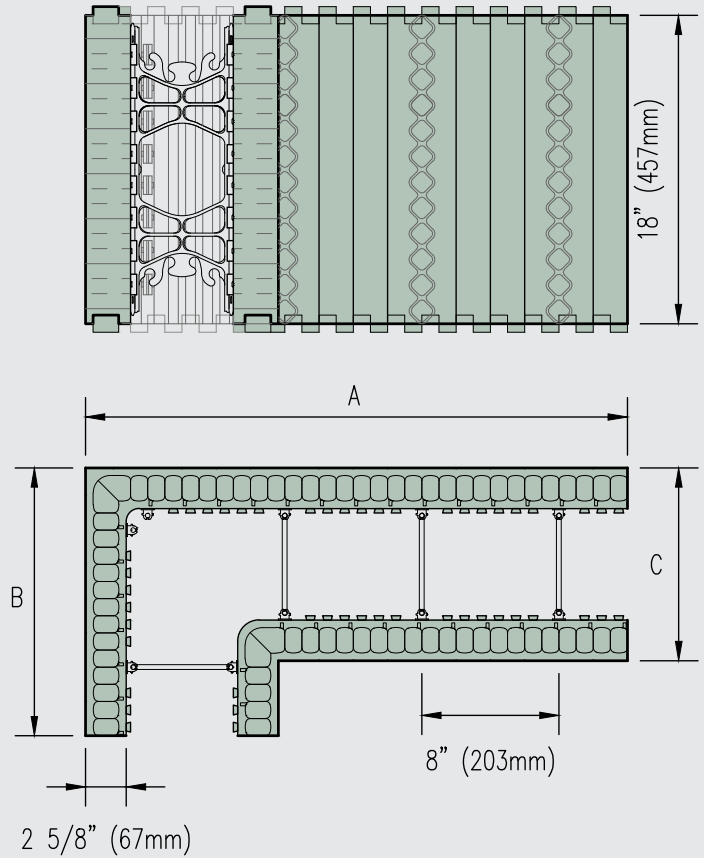


View of folding metal-hinged web and insert web for angled corner (included in order).

Assembled Product Shown Above



MAY WE SUGGEST: Vertical Joint Clip

8 5/8" (219mm) Vertical Joint Clip

This metal clip is designed to connect the form together at the vertical joints. It replaces having to tie wire or tape forms together while providing a solid connection using minimal amount of labor to install.



Qty./Box	200
Code #	VJC

Visit the Resource Center on NUDURA's website (nudura.com/resource-center) for design details, BIM library, installation links & more.

Refer to pages 29-34 for related product accessories & tools. For additional information visit nudura.com or call 866-468-6299.

Core Width	4" (100mm)	6" (150mm)	8" (200mm)	10" (250mm)	12" (300mm)
Length A	31 5/8" (803mm)	31 5/8" (803mm)	33 5/8" (854mm)	35 5/8" (905mm)	37 5/8" (956mm)
Length B	15 5/8" (397mm)	15 5/8" (397mm)	17 5/8" (448mm)	19 5/8" (498mm)	21 5/8" (549mm)
Width C	9 1/4" (235mm)	11 1/4" (286mm)	13 1/4" (337mm)	15 1/4" (387mm)	17 1/4" (438mm)
Height	18" (457mm)	18" (457mm)	18" (457mm)	18" (457mm)	18" (457mm)
Qty./Bundle	6	6	6	4	4
Code #	90-4	90-6	90-8	90-10	90-12

Units come assembled with folding metal-hinged webs.

Webs are included with assembled forms.